



Vikarprøvespill trombone

18. november 2024

Obligatoriske verk

- Tenortrombone: David / Trombonekonsert, 1. sats med kadens.
- Basstrombone: Lebedev / Trombonekonsert med kadens.

Orkesterutdrag tenortrombone:

- G. Rossini / Den tyvaktige skjære, Ouverture
- R. Wagner / Valkyrierittet
- W.A. Mozart / Requiem, Tuba mirum
- Saint-Saëns / Orgelsymfonien

Orkesterutdrag basstrombone:

- J. Haydn / Skapelsen
- R. Wagner / Valkyrierittet
- R. Schumann / Symfoni nr. 3
- R. Wagner / Rheingold

Rossini The Thieving Magpie

OVERTURE "LA GAZZA LADRA"

GIOACCHINO ROSSINI
(1792-1868)

Allegro

ff

f

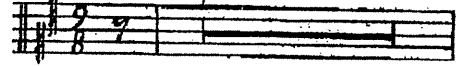
ff

ff

ff

Wagner: Ride of the Valkyries from *Die Walküre*

III. Akt Lebhaft



Walkürenritt

Mozart: Requiem

Nr. 2 Tuba mirum

Andante

Solo

1

8

14

44

Saint-Saëns: Symphony No. 3, 1st movement

Adagio

1^{er} Tromb.

p

poco cresc.

2 R 8 Orgue

1^{er} Tromb.

p

S

pp

Haydn: The creation

26. Chor und Terzett

Vivace

5

10 A

16 B

21

27

33

f

p

The image shows a single-staff musical score in bass clef with a key signature of two flats (B-flat and E-flat) and a 3/4 time signature. The tempo is marked 'Vivace'. The score consists of seven lines of music. Measure numbers 5, 10, 16, 21, 27, and 33 are indicated at the start of their respective lines. Dynamic markings include a forte (*f*) marking at the beginning and a piano (*p*) marking at measure 10. Section markers 'A' and 'B' are placed above measures 10 and 16 respectively. The music features a variety of rhythmic patterns, including eighth and sixteenth notes, and rests. The piece concludes with a double bar line at measure 33.

Wagner: Die Walküre: Ritt der Walküren

Vivace.

1 2 3 4

7 8 9 10 colln.

11

12 1 2 2

p *mf* *f* *ff* *pizz.* *colln.*

Robert Schumann
Symphony No. 3 in Eb Major, Op. 97

I-III tacent

Baß-Posaune

Feierlich IV

pp

Solo

f *f* *f*

nach und nach stärker

Die Halben wie vorher die Viertel

mf *f*

Lebhaft V

46 A 25 B 26 C 32 D 8 E

Basso sf sf p > > cresc.

144 *f* *ff*

157 *Basso*

G 40 H 23 I 19 K

247 *ff*

259 *Trh. Ten. sf*

p cresc.

Schneller

287 *sf*

302 *sf* *sf* *sf* *p cresc.* *sf*

320 *sf* *sf* *sf* *sf*

Trombone IV.

Moderato.

12

Fag. II & III. Fag. I & II.

p dolce *più p* *p* *ten.* *A*

p *poco cresc.* *mf* *dim. p* *dim.*

3 *pp* *pp*

più p *più p*

16 *Molto risoluto.* 3 *p cresc. f più f ff dim. P*

Tromba II in C.

15 46 *Corni.* 11 *Corno I in F.*

p cresc. dim. p

7 3 3 3 3

Tromba III & Tromba bassa in Es.

p *cresc.* *più f*

ff